

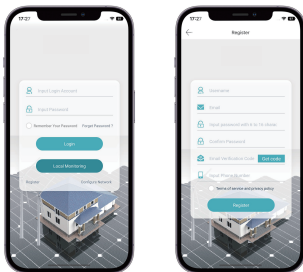
APP Operation Guide

Download APP



1 Account Registration

1.1 Register Account



Step 1: Accept the Terms of Service and Privacy Policy.

Step 2: Enter a username in the "Username" input box.

Step 3: Enter an unregistered email address in the "Email" input box.

Step 4: Enter two consistent passwords in the "Input password" and "Confirm Password" input boxes (password length is 6-16 digits).

Step 5: Click the "Get code" button to send an email verification code. Enter the received Email Verification Code into the "Email Verification Code" input box.

Step 6: Enter your mobile phone number in the "Phone Number" input box.

Step 7: Click Register.

1.2 Retrieve password

Step 1: On the login page, click the "Forget Password" button to access the password retrieval page.

Step 2: Enter the registered Email address in the input box and click "Retrieve Through Email".

Step 3: Enter the correct email verification code on the "Set new password" page.

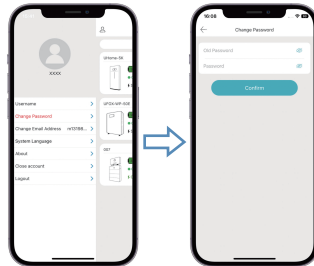
Step 4: Enter the new password twice in the password input box (the two passwords must be the same).

Step 5: Click the "Confirm" button to successfully set a new password Add device.

2 Personal Centre

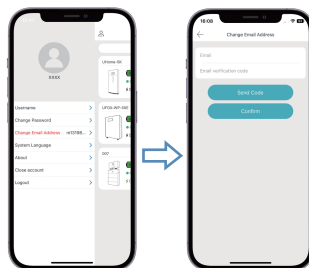
2.1 Change Password

If you need to change your login password, you can find "Change Password" on the personal center page, enter the old password of your account and set a new password on the password change page, and click Confirm to log in to the APP with the new password.



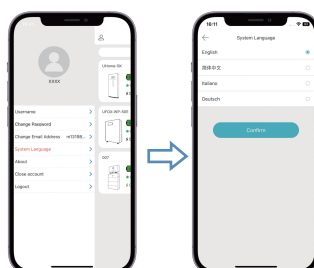
2.2 Change of email address

If you need to change the email address of your account, you can find "Change email address" on the personal center page, enter your new email account on the modify email page, then click the "Send Code" button, enter the correct email verification code and click Confirm. You can log in to the APP with your new email account.



2.3 System Language

If you need to change the current APP language, you can find the "System language" on the personal center page, select the language version you need to change on the system language page, click Confirm and then reopen the APP to change to the corresponding language version.



3 Add a Device

The monitor is workable under different conditions:
Local Monitoring Mode: Available under WiFi-free, Single Sign On conditions.

Online Mode: Only available under Network configured, WiFi-connected, Signed In conditions.

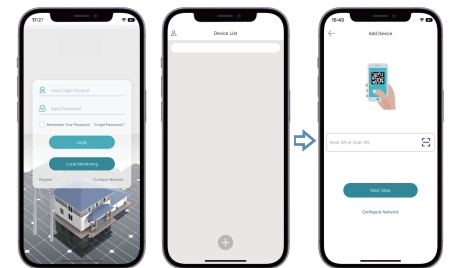
Note: Bluetooth device shall be paired under two modes, please ensure the Bluetooth is accessible.

3.1 Local Monitoring Mode

Step 1: Open APP, click "Local Monitoring".

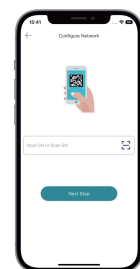
Step 2: Click the icon + in the device list to enter the "Add Device" page.

Step 3: Enter the serial number in the "SN" input box (or scan the code on the WiFi-Plug for automatic recognition) and then click "Next Step" to add the device.



3.2 Online Mode

Step 1: On the login page of the App, click the "Configure Network" button to enter the device configuration network page. Enter the SN code in the SN input box (or scan the code on the WiFi-Plug for automatic identification). Then click "Next Step".



Step 2: After waiting for the app to automatically search for the Bluetooth of the device and successful connection, the WiFi-Plug will automatically search and display the available WiFi networks. Manually select the WiFi network you want the inverter to connect with.



Step 3: After the connection is successful, click "Check Internet Connection Status" to check the network status.



Step 4: After the device is successfully connected to the network, the app will confirm that the network connection is successfully established.



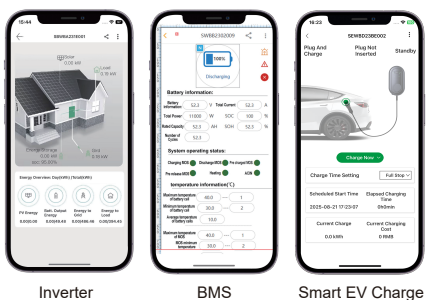
Step 5: After the device configures the network, log in your account, click the icon + in the device list to enter the "Add Device" page. Enter the serial number in the "SN" input box (or scan the code on the WiFi-Plug for automatic recognition) and then click "Next Step" to add the device.



4 Setup

4.1 Main Page

Click the corresponding device icon in the device list to enter the device page. On the device home page, you can click the battery, grid, photovoltaic, load, and Smart EV Charger switch icons on the device.



Corresponding to the monitoring main interface of the inverter, battery BMS, Smart EV Charge.

The current page displays the energy flow diagram of the device, the real-time power of the battery, grid, photovoltaic and load, the power information of the battery, and energy statistics. Click the icon in the energy statistics to jump to the Data Report page (only in online mode).

Sharing Device : The main user can go into the sharing page through the button, enter the user account to be shared on the sharing page and click OK to share successfully.

Note:

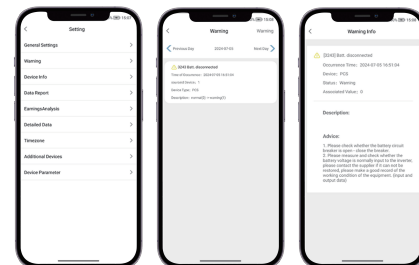
- Only the primary user can share the device
- The shared user only has the function of viewing device information
- After the main user deletes the device, the shared user cannot see the information of the device.



4.2 Warning

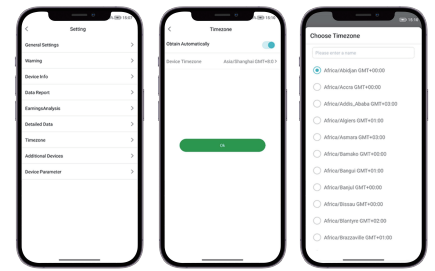
Click "Warning" on the Settings page to enter the Warning page, which allows you to view the warning information of the device according to the date, and filter according to the alarm category.

Clicking on "Warning" will take you to the warning details page, where you can see the cause of the warning and the recommended solution.



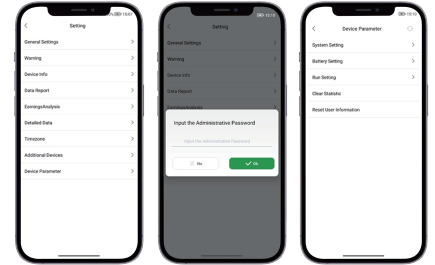
4.3 Timezone

In the settings page, click "Timezone" enter the time zone settings page. Enable automatic access to the phone's current time zone. If you want to manually select the time zone, you need to disable automatic access, and then click on the device time zone to select "OK".



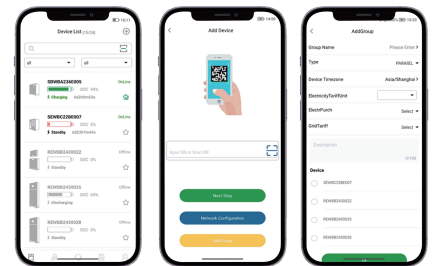
4.4 Device Parameter(Model a)

Click "Device Parameter" on the Setting page. Enter the correct administrative password to enter the Device Parameters page, then you can set the device-related parameters. (Note: The contents of the settings will be displayed and set according to different equipment models, please refer to the actual settings of the equipment model display for specific setting details.)



4.5 Add New Group

When adding a group for the first time, you need to go to the add device page by clicking the button + in the upper right corner of the device list, then click "Add Group" to add the group.



4.6 Add New Group

If a group already exists, you can directly add a new group by clicking the button + in the group list.

